


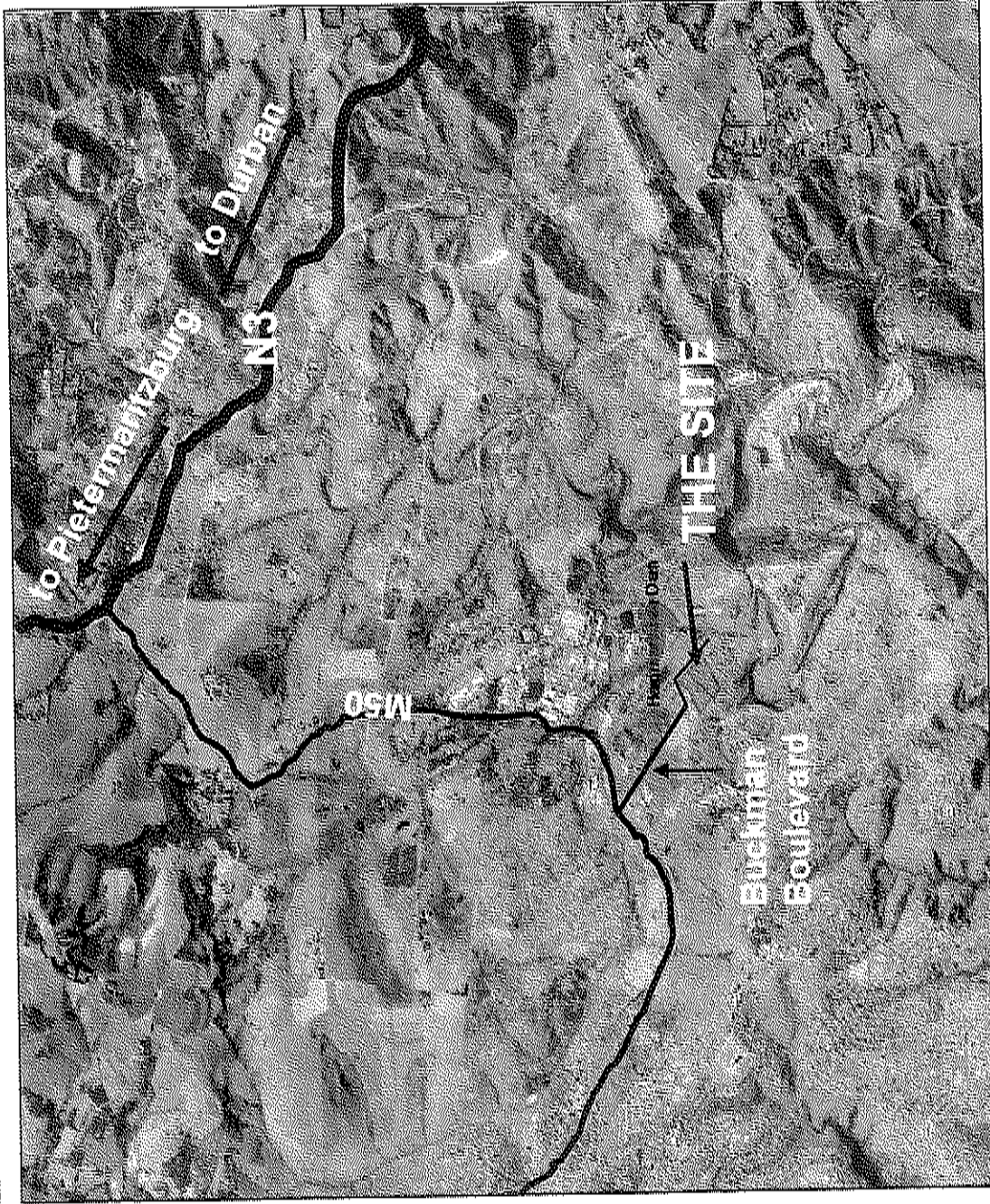
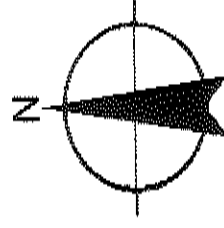


APPENDIX 1: MAPS

- **Map 1 – Context Map**
- **Map 2 – Locality Map**
- **Map 3 – Site Plan**
- **Map 4 – Land Use Map**
- **Map 5 – Ward Context**
- **Map 6 – 5km Buffer Map**
- **Map 7 – 1km Buffer Map**

Legend

-  Buckman Laboratories site
-  Hammarsdale Dam
-  Roads



CONTEXT MAP

Tel. : 031 201 7510

Fax : 031 201 8939

E-mail address: md@pravinamar.com

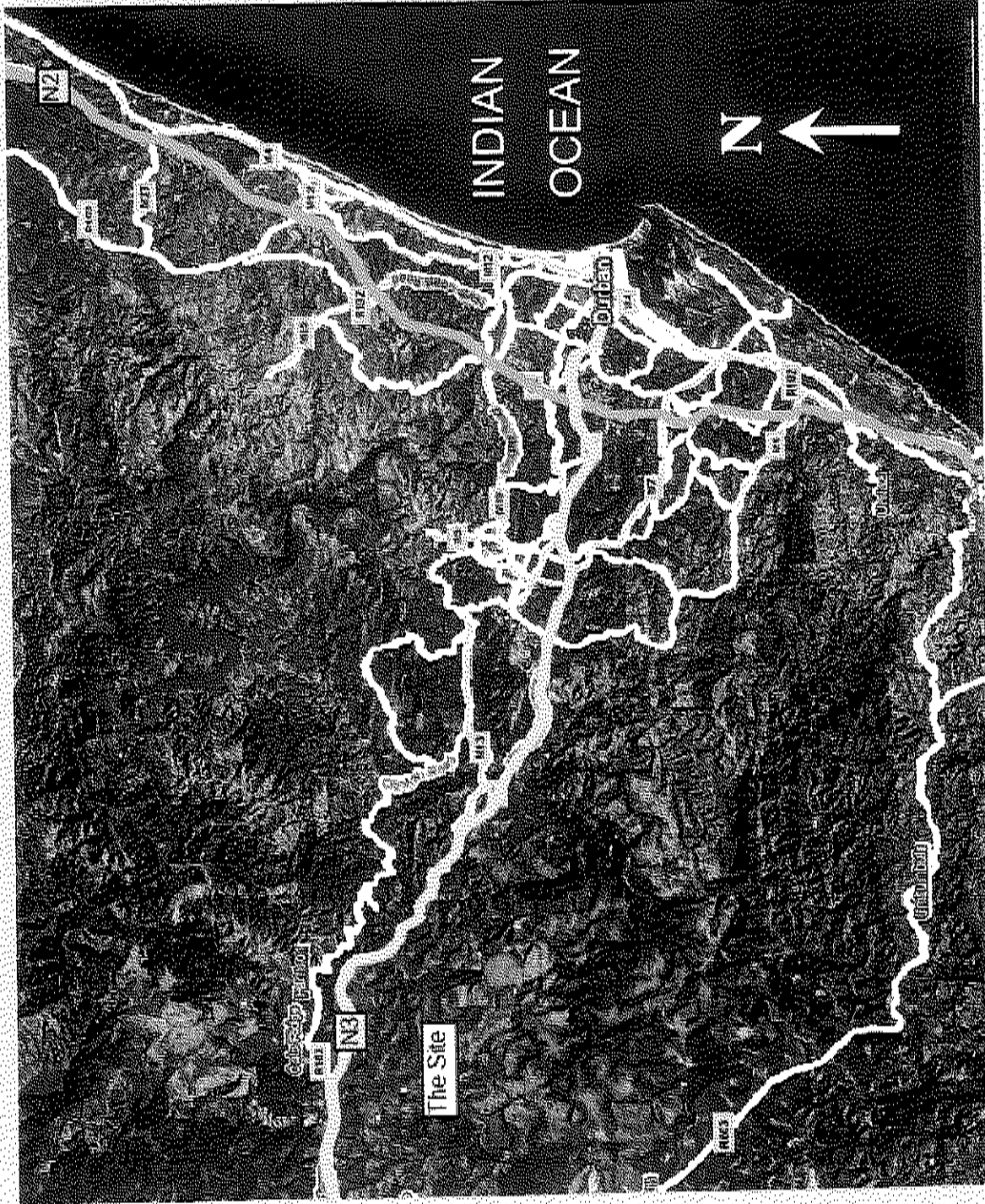
Website: www.pravinamar.com

Scale:

1: 50 000

LEGEND

- N2
- N3
- Regional Roads
- Municipal Roads



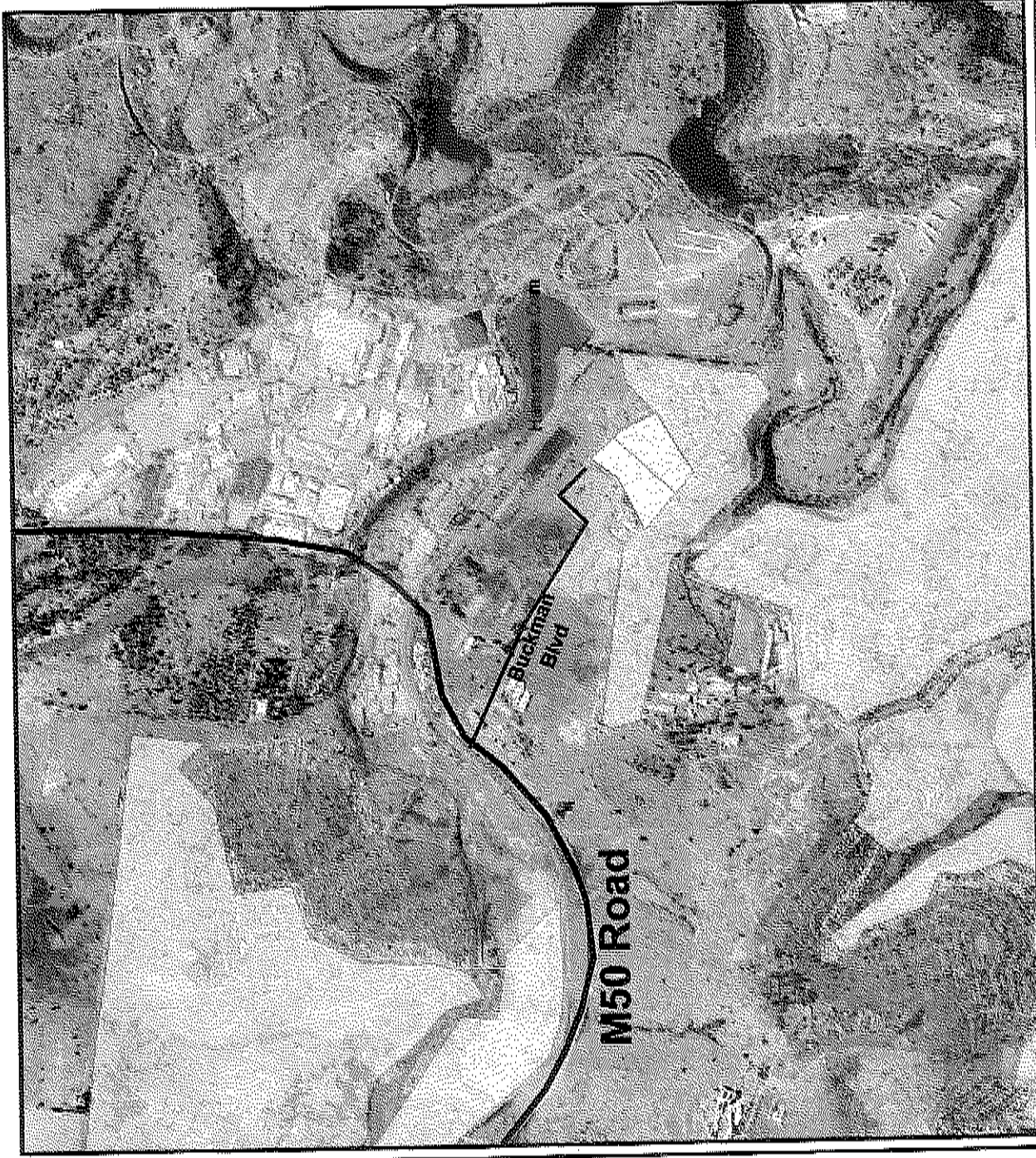
Tel: 031 201 7510
Fax: 031 2018939
Email: md@pravinamar.com
Website: www.pravinamar.com

LOCALITY MAP

Pravin Amar
Development Planners



N.T.S



LOCALITY

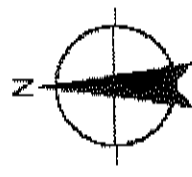
INDIAN OCEAN

N3

NTS

LEGEND

- Mixed land use
- Industrial Land Use
- Informal Settlements
- Formal Housing
- Buckman Laboratories
- Hammersdale Dam
- M50 Road
- Buckman Blvd



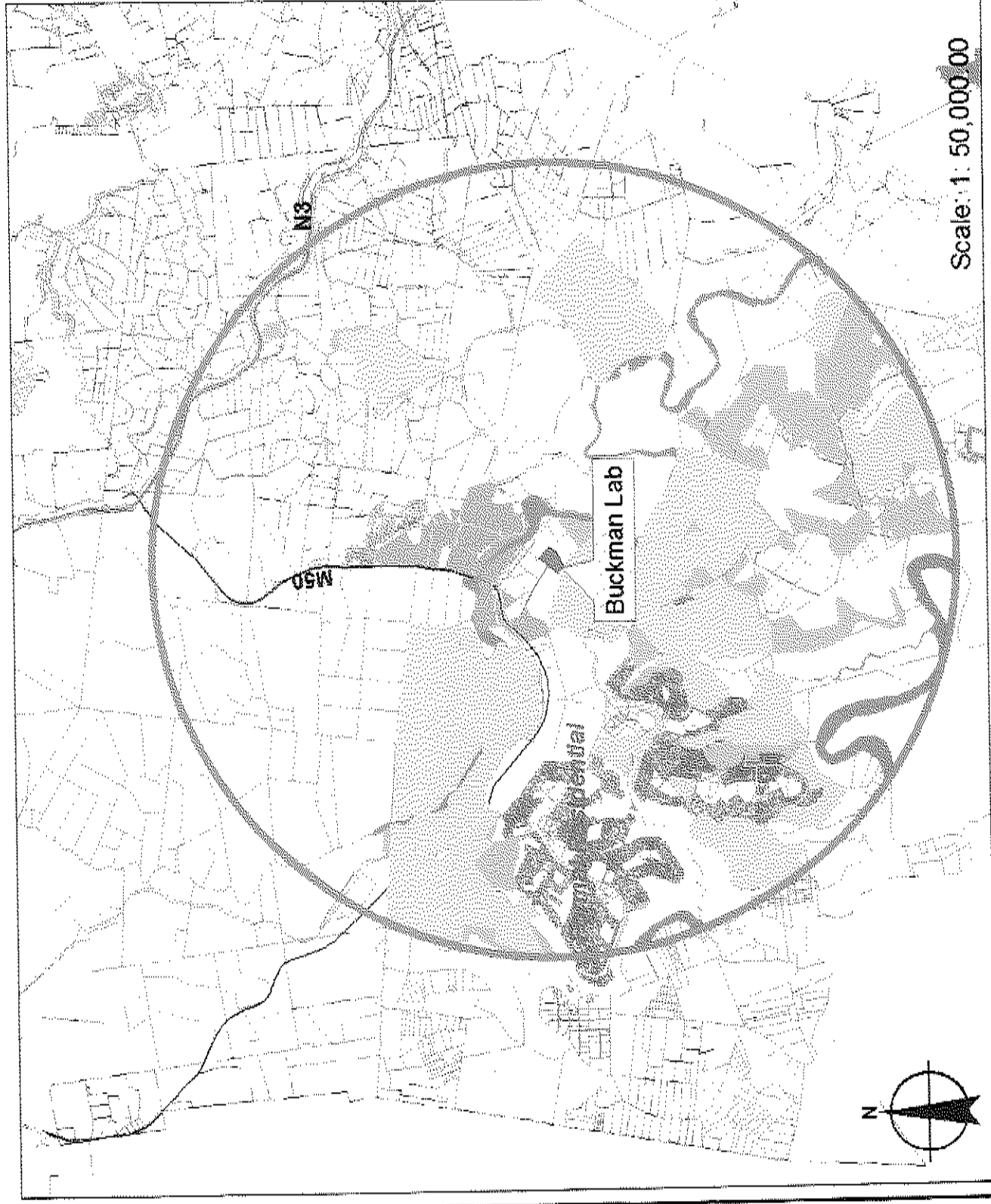
Prepared by:
Pravin Amar
 Development Planners

LAND USE MAP

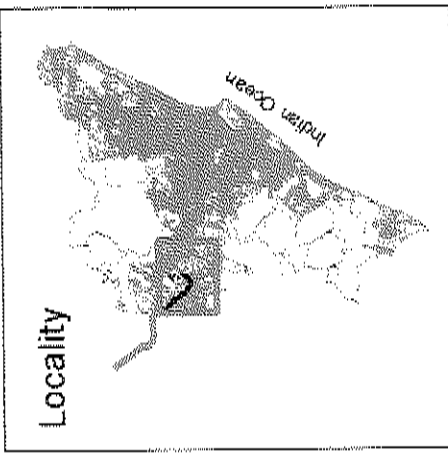
Tel: 031 201 7510
 Fax: 031 201 8939
 Email: ind@pravinamar.com
 Website: www.pravinamar.com

N.T.S
 28/07/2008

Buckman Laboratories 5km radius Buffer Map



Scale: 1 : 50,000'00



Locality

Legend:

- Mixed Use
- Possible Developments
- DMOSS/Floodline
- Informal Settlements
- 5 km radius buffer
- Buckman Lab Property
- /Access to Buckman
- N3
- M50

Source: eThekweni GIS layers

Map Prepared By:
Pravin Amar Development Planners
Tel: 031 201 7510
www.pravinamar.com

Buckman Laboratories 1km radius Buffer Map

